

Shoreline News

Fall 2016

STEENBURG LAKE COMMUNITY ASSOCIATION NEWSLETTER

IN THIS ISSUE

President's Message

by Pat Stallaert

Well it certainly has been a summer to remember. Long hot days full of sunshine, and when we did get rain, it seemed to come all at once, and with a passion.

Canada Day was greeted with heavy rains, strong winds and hail which saw trees and hydro poles brought down like they were mere toothpicks. The ravages of the wind and rain gave way to sunshine and the almost incessant sound of chainsaws and generators as cottagers worked to recover from fallen trees and branches.

Canada Day fireworks couldn't be postponed forever, as a few hardy spectators managed to take in another spectacular show after a day of rain.

Although July 1st might have been the most memorable storm of the summer, it wasn't the only one as those who attended our annual beach regatta and barbeque will attest. Events and celebrations were cut short by a terrific downpour, but not before friends and families could enjoy a hardy feast and the watery activities.

Our Roadside Clean-up was another activity that fell victim to the weather, but luckily, a few keen volunteers managed to keep litter in check on an ad hoc basis. Even the Fun Run had to be rescheduled to the next day.

Fortunately, we had excellent weather the day of our Annual General Meeting and that scenario was again repeated for the first ever Artisans of Steenburg exhibition.

While much of the province suffered from low water levels and near drought conditions which resulted in all-out fire bans for much of the summer, we were fortunate to experience only a short fire ban late in the summer.

But as much as Mother Nature tried to remind us who is boss on the lake, one couldn't help but notice how the spirit of community was alive and well: Neighbours helping neighbours was a scene repeated over and over again around the lake.

Yes, it was a great summer that helped to generate some wonderful memories which we can cherish for years to come. Good times spent with family and dear friends in one of the most beautiful places on earth. That's a pretty tough combination to beat!



President's Message

Photo Contest Winners

AGM Update

Donation to Local Fire Department

Fire Safety

Memories of Bass Lake (Cont.)

CVCA Fall Drawdown

Membership Report

Lake Stewardship Report

Municipal Affairs Report

New AED Device on Lake

Neighbours Save the Day

Social Corner

Financial Report

The Cottage Bookshelf

Cottage Cookbook

Hydro One Update

Competition in the Propane Market

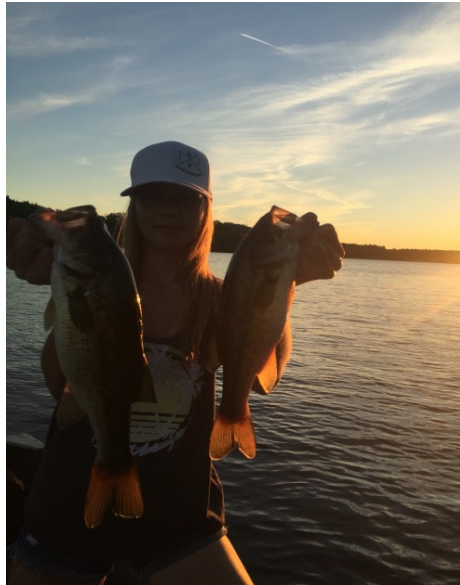
New McGeachie Trails Campaign

Around the Lake...

Photo Contest Winners



Scott Wylie - Action



Isabella Ploszaj - Tweens



Melissa Menard - Landscape

SLCA Executive

PAT STALLAERT
PRESIDENT

President@steenburglake.com

(Currently Vacant)
VICE PRESIDENT

VicePresident@steenburglake.com

JUDY PLATT
SECRETARY

Secretary@steenburglake.com

DAVE MCDONALD
TREASURER

613-474-2946

Treasurer@steenburglake.com

DIANE BURKE
MEMBERSHIP

613-474-2254

Membership@steenburglake.com

ANNA HUK
SOCIAL

Social@steenburglake.com

DON MILLS
LAKE STEWARD

613-474-4224

LakeStewardship@steenburglake.com

NANCY KELLY
MUNICIPAL AFFAIRS

MunicipalAffairs@steenburglake.com

DEAN BUTLER
MERCHANDISING

613-474-0268

Merchandise@steenburglake.com

MELISSA STALLAERT
NEWSLETTER

Newsletter@steenburglake.com

ANTHONY GENOVESE
WEB/INTERNET

Internet@steenburglake.com

PETER WAYWELL
ROCK MARKERS

rocks@steenburglake.com



AGM Update

by Pat Stallaert

On July 31st, we had a great annual meeting held at the Limerick Community Centre. In recognition that our lake is divided in two townships and that many of our members are closer to the municipal offices in Tudor, your Executive are in investigating the possibility of holding next year's meeting at the Tudor-Cashel Municipal Office on Weslemkoon Lake Road. Look for final details of the AGM in your spring issue of The Shoreline News, and on our website at steenburghlake.com.

Though we never seem to get a very large crowd at our annual meetings, this year's meeting was very well attended, not only the usual faces, but quite a number of new or returning members who have not attended in years.

Our special guests Lech and Hao Jedral gave an amazing presentation in the form of a short video followed by a slideshow, of their more than 20 years of visiting our lake and taking wonderful photos of wildlife and scenes on the lake. Lech's talk was both informative and entertaining. During the intermission, as well as before and after the formal meeting, the audience was given the opportunity to view a collection of hundreds of large, high resolution prints of photos they had taken over the years.

Members of your executive gave their reports. I won't get into all that was said as details are available in the draft minutes of this AGM, at info.steenburghlake.com. Minutes of past AGMs and all Executive meetings are also available online. I'll just cover off some of the main highlights of the meeting.

Our lake association continues to be in a strong financial position thanks to a high level of membership, strong merchandise sales, healthy support from our local sponsors, careful control of expenses, and wise investment strategies over the years. Again, a detailed financial statement is available upon request from treasurer@steenburghlake.com.

Our lake continues to be in a healthy condition as well. Although phosphate levels are moderately high, the levels have been stable for years. Water quality test results under the Lake Partner Program will only be available late in the year. We continue to monitor for invasive species, but the health and quality of our lake depends on each and every one of us around the lake, doing our part to protect this fragile ecosystem we love so much. The FOCA Shoreline Owners Guide to Healthy Waterfronts distributed in canvassing packages this year is a great starting point for advice on how best to coexist with our lake.

Dave Langman offered to investigate the possibility of reintroducing lake trout to our lake and will contact a fish hatchery in Bancroft to determine if this would be feasible.

Your SLCA Executive is pleased to announce that a donation of \$100 was made to the Crowe Valley Conservation Authority for the development of new trails opening up the north-east portion of the McGeachie Conservation Area. More importantly, this, and any other donations to this cause made by members of the SLCA will be matched by an anonymous donor (see more on the New McGeachie Trails Campaign in this newsletter for details on how you can easily donate online).

A motion was passed directing the SLCA Executive to investigate and procure an Automatic External Defibrillator (AED) to be available on the lake at a central location (see article on the new AED elsewhere in this newsletter).

Anna Huk volunteered to serve as our new Social Director, and as there were no nominees for the position of Secretary, Judy Platt agreed to continue in this role in an acting position. There were no nominees for the position of President, so yours truly agree to serve in that role and was appointed by acclamation.

As always, a brief social time followed allowing members to mingle with old and new friends, while we enjoyed refreshments and great snacks provided by Jackie Rudd, Tina Lloyd, Anita Waddell and Madeline Waywell.





Donation to Local Fire Department

In an effort to encourage the use of Paypal for paying membership dues, your SLCA Executive launched a campaign to donate \$1 from each membership paid via this online service.

We are happy to report that the use of Paypal has nearly doubled this year. As a result, the SLCA presented Fire Chief, Jason Post with a cheque for \$40. Donations like these help to purchase new equipment that may someday save lives and property.

Thank you to all members who renewed via Paypal, and for those who still have this on your To-Do List, don't worry, you still have time...



Fire Safety

by Pat Stallaert

With the cooler autumn weather, many home owners and cottagers begin heating their dwellings with a number of fuels. This is just a friendly reminder that every dwelling in Ontario (and that includes seasonal cottages) must have a working smoke alarm, and if you heat with any combustible (e.g., wood, propane, kerosene) you must also have a working carbon monoxide detector. These devices have expiry dates that range from 7 to 10 years.

Check your device carefully to ensure it has not expired and needs replacing. Test your alarm regularly, and make sure it has a fresh battery before the start of heating season.

Have an escape route planned and practise an emergency exit, especially if you have young children in your household or cottage. Avoid clutter such as old papers and other combustible materials. Keep exit ways clear.

Make sure chimneys are cleaned regularly to avoid the build-up of dangerous creosote. Keep fireplace doors shut unless they have a proper fitting spark screen drawn across. Keep papers, cardboard and firewood well clear of where any sparks and embers may land.

Never store combustible liquids and gases like gasoline or propane indoors.

Make sure that electrical wiring is safe, that circuits are not overloaded and that oversized fuses are never used in regular circuits (i.e., most circuits should only use 15 Amp fuses or breakers unless they are specifically designed for heavier loads like newer kitchen receptacles - 20 Amp, or water heaters dryers and stoves). Never run extension cords under rugs.

Never leave candles unattended.

Follow all local fire regulations regarding outdoor burning.



*A Gift of Time Away with Family.
Celebrating Cancer Recovery.*

www.cottagedreams.ca

OPEN DAILY
Victoria Day to
December 31
(Winter Weekends)
Mon to Sat 10-5:00
Sunday 12-5:00



Follow us on
Facebook.
Join us for info,
draws & contests,
local history, and
fun local events!

Visit historic 'downtown' Ormsby (Pop. 20), at the corner of Hwy 620 & The Old Hastings Road.



**2012 & 2015 Hastings Tourism
'Business of the Year'**



'TREATS & TREASURES'

Step back in time when you enter our 1890s general store. Discover room after room filled with fine Canadian arts & crafts, vintage toys, antiques, nostalgia books, cottage-themed gifts & clothing, country-themed merchandise... and penny candy!

We feature **Steenburg Lake** clocks, mugs, coasters, 3D map art, clothing, hats, puzzles, custom vintage signs, post cards and more!

And while in Ormsby, plan a visit to...
The Old Ormsby Schoolhouse
"Educated Dining" & Tea Room
Phone 613 337-5067
for restaurant information & hours.

www.OLDHASTINGSGALLERY.CA




Take a video tour on our website.

Membership Report

by Diane Burke

I hope everyone enjoyed their summer and the great weather we had this year. At this time, we have 156 paid members in our association, with one canvassing area still outstanding.

However, our numbers are down slightly from previous years. From the feedback I received, all cottages were visited at least once, however people were not there or the cottage was being rented. We do rely on our dues to facilitate our lake activities and if we didn't get to see you this year, you can always submit your payment via PayPal or by mailing a cheque in future.

The usage of PayPal continues to increase. As mentioned in the Spring Newsletter, we agreed to donate \$1 for each membership paid through PayPal and a cheque has been presented to our local fire department in the amount of \$40. Thanks!

I would like to thank all of our canvassers - John Harnett, Margot Withey, Marlene Pollard, Wendy Butler, Pat and Heather Stallaert, Dave Anderson, Elaine McCarthy, Christina Candy, Janet Vander Ploeg, Wendy Rudd, Dave McDonald, Susan Bridger, Joanne Boyce, Brendan Cameron, Cathy Wilson and Eileen Walsh. Your assistance and support are truly appreciated.

We also have some new members to welcome to the lake this year. They are Bob and Sheila Smith, Janet and Jerry Vander Ploeg, Steven and Michelle Yoksimovich, Weimin Chen and Shimei Fei, Stefano

Digiorgio and Elizabeth and Sean Harvey. We look forward to meeting all of you! If I have missed anyone, please let me know.

We congratulate Joan and Robert Wallace on achieving their 50 year member status this year.

On a sad note, we have recently lost 2 members. Joseph Burke on the North Road passed away in August. As well, Tom Hughes, also on the North Road, passed away in October. Tom was a 50 year + member and was active in the cottage association for many years. We extend our condolences to both families.

Thanks again for your ongoing support, have a great winter and see you all in the spring.



Memories of Bass Lake (cont.)

by Richard McCarthy

CHAPTER 22 – The Long Drive to the Lake

It was 1953 when we first started making the long drive to Steenburg Lake. Our family car was a 1953 banana yellow Pontiac with the distinctive Pontiac Indian head on the hood. My older brother John sat beside me in the back seat, and we'd both be bouncing up and down in anticipation of the trip to the cottage. My sister, Jean, would usually get to sit in the middle of the front seat between Mom and Dad, as she had a tendency to get car sick. Possibly she just couldn't stand sitting with her brothers.

We began our journey heading east from Toronto on Highway 2. When we arrived at Port Hope, we knew we were about half way to Belleville. One of our first geography lessons in life was learning the names of the cities as we approached Belleville. Port Hope, Cobourg, Colborne, Brighton, Trenton and finally Belleville. Of course, Highway 2 travelled right through the centre of each community, so stopping at red lights in each place gave us the opportunity to look around and see what was going on outside of Toronto.

Travelling on a two-lane highway was the norm back then. If you happened to get caught behind a slow-moving vehicle, it could easily add another half hour to the journey. Finding a safe place to pass during a busy time on the road was a real challenge.

Once we reached Belleville, the trip north came next. Heading north from Belleville on Highway 62, the first little place we came to was The Village of Foxborough. Morris' Esso service station at Foxborough on the east side of the highway was always a mandatory stop on our long trip. As well as using their washroom facilities, we all had an ice cream cone. Morris' served great ice cream cones, and we all had to save the end of the cone with some ice cream in it for our dog. He anxiously watched us eating the cones, anticipating his treat.

If any last minute shopping items had to be picked up, Kincade's grocery store in Madoc was the place to go. Further along, if the Eldorado Cheese Factory was open when we travelled by, we would usually stop and pick up a large wedge of cheese. We would watch one of the employees cut our cheese using a wire with wooden handles on each end. A free bag of cheese curd was provided for the last phase of our journey.

Mom would stay at the cottage with us for the summer, so as soon as school was out, the trip to the cottage took place. When we travelled home on the Labour Day Weekend, things looked strange, as we had been away for so long.

Every weekend, Dad would drive to the cottage from Toronto. It took 5 hours to travel each way, but I'm sure he felt it was worth the drive.

Highway 401, a 4-lane highway was developed as far as Highway 115 that headed northeast to Peterborough, and that resulted in some timesaving. Eventually Highway 401 was extended all the way to Belleville, and the trip gradually reduced to 4 hours, then 3 hours.

After my education, I started working as a young man in Toronto. Before starting a family, Marilyn and I felt it would be great to live in Peterborough and only have to travel half the distance to the cottage, and get there in an hour and a half. Boy, wouldn't that be great!!

After moving to Peterborough, we told some of our friends where our cottage was, and that it was only an hour and a half away. Their reply was...."You're crazy to travel that far to a cottage!" Apparently most in the Peterborough area travelled between 20 minutes and half an hour to get to their places.

We think Steenburg Lake is definitely worth the extra travelling time!

CVCA - Fall Drawdown 2016

Fall weather means cooler temperatures, shorter days, autumn colour and of course, fall draw down of lake levels on controlled lakes in the Crowe Valley watershed!

So, the fall draw down or the intentional lowering of lake levels is a watershed management tool the Crowe Valley Conservation Authority uses to mitigate the effects of another normal cyclical event, the spring flood. But, how does this work, how much is the lake affected, how much is the lake lowered and the list of questions keeps growing.

First and foremost, the fall draw down has been a "regular" fall event since the construction of many of the dams on the Crowe River, lakes and its tributaries. Every year, staff reduce lake levels by opening sluiceways by simply removing the stop logs which were in place to maintain higher summer recreational levels. It is the lowering of the water on these lakes which creates storage capacity (extra space) for the spring freshet (runoff). This extra capacity helps the CVCA to mitigate any potential flooding resulting from the freshet. Typically, the lowering of the lakes averages approximately 35 – 40 centimetres (14 to 16 inches), depending on the lake and the dam's discharge capacity. This water management strategy is a normal practice by the CVCA to help protect lives and property during the spring freshet. Of course, the magnitude of a flood in the spring will vary from a minimal flood where very little property is affected or damaged to a 1:100 year flood (or even worse). Since we never know what the extent of the flood will be in the spring, we draw down lake levels every year to be prepared.

The CVCA begins the fall draw down cycle relatively early in the autumn season for one specific reason, which is to respect the natural cycle of certain fish species in the northern part of the watershed. Managing lake levels to help protect people and their personal belongings during floods is vital, but the CVCA has an obligation to work with nature's cycles and rhythms to reduce or eliminate any impacts from the actions CVCA takes as it implements the watershed management strategy.

So, for example, the CVCA starts the draw down on Paudash Lake to accommodate lake trout. This particular species will spawn generally on rocky reefs or shoals in the fall. If the water was left at the summer level during the spawn, then, as the water is lowered, it would leave the spawn "high and dry", killing the eggs. Therefore, the CVCA begins lowering Paudash Lake early in September and finishes the draw down to the winter level by the 30th of September.

The remainder of the draw down follows a progression of lowering lake levels from north to south in the watershed during the period from 1 October to 15 November. In total, the CVCA removes stop logs at the dams located on Paudash, Wollaston, St. Ola, Steenburg, Kasshabog, Oak, Round, Cordova, Belmont, and Crowe Lakes.

The draw down is targeted to be completed by the November date in order to ensure lakes are at their winter setting before the winter freeze. Of course, the CVCA's target could easily be "thrown a curve" if heavy rains arrive late in the autumn. This would add a significant amount of water into the watershed system making it difficult to reduce lake levels. However, should this possibility occur, the CVCA will take the necessary steps (remove more stop logs) to reduce lake levels to the winter setting, which means it may take just a little longer to get to the right levels.

Although the CVCA watershed has experienced low water conditions, particularly on the North River system this past recreational season, the draw down will proceed as normal in order to ensure the extra capacity is attained for the spring runoff. The watershed has experienced a number of dry years, and every spring the freshet has been high enough to swell lakes, rivers, streams and wetlands, and every spring the CVCA removes more stop logs to pass excess water downstream.

As the CVCA manages the water system in the fall, you can also help yourselves to minimize any spring damage. Please remove your docks (if possible) and any other items out of the flood plain as you close down the cottage or prepare your home for the winter. Water is a powerful force and can easily damage property or sweep items both large and small downstream when flows are high. Flooding causes more damage and the resulting expenses associated with flooding are higher than any other disaster in Ontario. If you have experienced flooding issues in the past or think you are susceptible to flooding, please contact the CVCA or follow us on facebook or our website.

If you have any further questions regarding this aspect of water management in the Crowe Valley watershed, please do not hesitate to call or e-mail Neil McConkey, CVCA Water Technician. He's had 25+ years of experience managing your watershed

The above article was reprinted with permission from the Crowe Valley Conservation Authority's Fall 2016 Crowe's Nest Newsletter available by contacting info@crowevalley.com

Joanne Barr
Energy Sales Representative
C: 613-849-7480
joanne_barr@superiorpropane.com

SMART TANK

JOIN THE STEENBURG LAKE ASSOCIATION
BUYING GROUP, ASK ME HOW?
PRICE MATCHED @ 0.495/LITRE LOCKED
IN & RENEWED ANNUALLY ON OCT. 1ST
CHECK OUT OUR SMART TANK - FOCA
MEMBERS ARE ELIGIBLE FOR THEIR 1ST
YEAR RENTAL FREE
CALLOR EMAIL ME TODAY!

Superior Propane
1-613-849-7480

Lake Stewardship Report

by Don Mills

It is October 16 and as I look outside I see pouring rain and leaves coming down all at about the same rate. I know from a trip around the lake last week that most of the boats are out and a lot of the docks put away for winter. The summer has come and gone; the longer I live here the faster they seem to go.

We had some beautiful weather and some less than beautiful weather this summer. As any of you who were at the Canada Day fireworks would attest to, the storms came fast and were severe. After one with high winds, hydro poles were down on the South Road and trees uprooted on Maple Landing. We had severe pouring rain storms and a severe dry spell where we ended up under a total fire ban. Our neighbours to the south ended up under a restricted water use advisory which lasted most of the summer.

Part of the job of the Lake Steward is to do monitoring of the water in the lake. In doing that we are attempting to determine whether invasive species such as zebra mussels have entered the lake and are also trying to assess whether the quality of the lake water is changing from previous years. Water samples were taken July 4th to collect any evidence of zebra mussels or spiny waterfleas. Testing for water quality was done monthly throughout the summer months. Although the results will not be known until the New Year, based on the numbers from this summer, I don't think the quality of the water in Steenburg Lake has changed much. It should be noted, however, that of the 126 lakes sampled by the Invasive Species Watch Program in 2015, zebra mussel veligers (zebra mussel young) were found in 31 lakes with 11 being first occurrences. Spiny waterfleas were discovered in 13 lakes with 6 new occurrences.

For those of us who live here fulltime, the weekdays tend to be the more quiet time. That seems to be when the wildlife comes out and wanders more. Earlier in the summer, a bear was sighted late in the evening near the beach on the North Road, we had a moose in our yard in August, and our neighbours down the road have seen a large coyote in their yard, on their game camera, the last few nights. The doe that was at our place in the spring with two small spotted fawns- all three have changed colour for the winter. The forecast on Bancroft radio the other day was for some possible flurries in the morning. I received my snowmobile magazines in the mail this week and checked my fish hut for critters- bring on the winter.



Your Promotional Product Specialists
www.butlermarketing.com

Municipal Affairs Report

After perusing through that great Steenburg Lake Community Association website, I noticed there were a couple of vacancies on the board. After an e-mail conversation with Pat Stallaert and inquiring about Municipal Affairs, I found myself having volunteered to be on said board.

My name is Nancy Kelly and my family and I have been cottaging on Steenburg Lake for 30 years this coming May. We love it here. Most summers, on any given day, you would find someone out and about. As often as we can, we are here in the spring and fall. There is a sense of calm when we turn down Steenburg Lake North Road. I used to have a cat and he would sleep the whole way up, but as soon as we turned down that road, he was up and looking out the front window. We have a daughter living in Banff who came home this summer for a visit. Walking onto the dock, she snapped a picture, 'this is home'.

This beautiful lake we call home for all or part of each year is situated in two Townships. Each Township has its own services and priorities. This is a great opportunity to learn about the two governments on one lake. I will try to keep you informed about the activities of the Townships that may affect Steenburg Lake and the area. Having read some of the previous entries from the former Municipal Affairs member, I have some big shoes to fill.



New AED May Save Lives

by Pat Stallaert

As mandated by the membership at our 2016 Annual General meeting, your SLCA Executive have investigated and purchased an Automatic External Defibrillator (AED) for the lake. The model selected is a Lifeline by DefibTech. This is the same device used by our local fire department and by many municipalities across Ontario.



The AED will be kept at the Cochrane's boat launch at 1035A the North Road. Mike Cochrane is a member of the Limerick Volunteer Fire Department as are his neighbours across the road, Karl and Janet Sabotka.

For anyone not already familiar with AEDs, these are small portable devices designed to analyze heart rhythms, and determine if a high voltage shock is advised to return a casualty's heart back to normal sinus rhythm. These devices are designed to walk anyone through their use in an emergency with their step-by-step audio instructions. They will not deliver a charge if it is not required. A built in heart monitor will even coach the first responder through administering CPR if required.

AEDs are not for all heart conditions. For example, they will not restart a heart that has stopped beating, but if applied within minutes of certain heart conditions known as Sudden Cardiac Arrest, they can restore heart rhythms to normal and save lives.

As most individuals are not trained to recognize specific heart conditions, it's a safe measure to obtain and use an AED whenever a cardiac arrest is suspected as the AED will not deliver a shock if it is not required.

If someone is suspected of having a heart attack, always call 911 first, to ensure that an ambulance is dispatched as quickly as possible and trained paramedics are on their way. Once this is done, you may advise the 911 operator that an AED device is close at hand at the boat launch on Steenburg Lake North Road, and that the Limerick Fire Department are aware of its exact location.

At this point, a call to the Cochranes or the Sabotkas can be made, or if near enough, someone can be sent out to get the AED. Someone, ideally a trained first-aider, should always remain with the casualty.

Though AEDs are designed so anyone can use them effectively, it is highly recommended that individuals be trained in emergency first aid and CPR as the AED may advise that CPR is the only or subsequent treatment required.

Your SLCA will attempt to arrange demonstrations of the new AED in the new year, and if interest is there, may arrange for emergency first aid training at the lake next year.

Special pricing on AED provided by:

S.O.S. Emergency Response Technologies

The Sign you want. The Agent you need.



BROKER, ABR

SOLD



"CLICK or CALL I DO IT ALL"

Bonnie McLean-Dyas, Broker



RE/MAX[®]
COUNTRY CLASSICS LTD. BROKERAGE
Independently Owned & Operated

Direct: 1-877-670-SOLD (7653)

Cell: 613-318-9729

Home: 613-474-2257

Office: 613-332-0444



bonniemc@nexicom.net

www.bancroftrealestate.net

"Let's Talk Real Estate"

Social Corner

by Anna Little Huk



With another fantastic summer on Steenburg Lake behind us, it's time to start looking forward to 2017!

I'm Anna Little Huk, and I'm extremely excited to hold the position of Social Chair for the upcoming year. We'll be bringing back everyone's favourite Steenburg Lake

events, like the annual Regatta & BBQ, Fun Run, and Road Clean-up, plus adding a few new ones along the way! Dates/times and all the details you need to know will be in the spring edition of the newsletter.

A huge thank you goes out to the hardworking volunteers who stepped up and made our 2016 events such a success. They couldn't have happened without you.

Have a suggestion for a social event or want to get involved? Consider volunteering with the Community Association! Meet new people and have fun, without a huge time commitment. Email me at social@steenburglake.com with your ideas!

Beach Regatta and BBQ

Though it wasn't the best attended Regatta & BBQ we've seen in recent years, there was no doubt that it was one of the most fun and the BBQ was delicious. Rain clouds held off until everyone had a chance to enjoy some food, and most events had concluded. The skies did open up however in a big way, bringing this year's event to a very sudden and dramatic end.

Thanks again to the brother and sister team of Justin and Jennifer for coordinating the races, and to the Stallaert family for helping out with the BBQ.



Fun Run another Smash Hit

With the warmest summer on record and no rain in sight, the fun run would be off to a great start. **WRONG!!!** We unfortunately had to postpone the run to the Sunday, due to RAIN. Much needed albeit.

So now I am quaking in my wet running shoes that we won't have anyone come out, but no, you came out in droves and I will call it a **sell-out**.

Tons of new Steenburg Lake members along with the old time die-hard members were at the start line. Our categories were full to the brim with enthusiastic runners/walkers of all ages. Many thanks to the volunteers that make my job running the event, on the day of, a cinch. I couldn't do it without you, honestly.

The laughs, the stories the smiles and sweat on your faces make this event, my favourite of the year. Can't wait to see you again next year. If you have never witnessed or been a part of this run, you should come on out. You won't be disappointed.

Wendy Butler



Artisans of Steenburg

The first Artisans of Steenburg exhibition went off fabulously. There were painters, carvers, wood turners, weavers, photographers, quilters, potters jewellers, and more: A great representation of artistic talent available right here on the lake.

Let's hope that this can grow into one of Steenburg's great annual events.

Thank you to all the exhibitors who took the time to share their passion with us, and special thanks to Lynne Rusaw for organizing and the Cochranes for hosting it.



Canada Day Fireworks

The Cochranes again hosted a spectacular fireworks display this year. Unfortunately, the violent wind and rain storm that hit the lake on July 1st meant that the event had to be postponed to the next day. Although the weather still wasn't great, things cleared up enough by evening time to manage to get the show on.



Golf Tournament

Another golf tournament can go in the books as a success. The weather was perfect (started with a quick rain and then hot and sunny). We had 39 golfers this year (1 no show) so 9 teams and one with 3. Lots of new golfers from the lake joined the fun. We had a great steak lunch, and everyone went home with some nice prizes afterward, which were donated by families on the lake.

Jenny Cochrane took some great pictures of our event, and even included some golfers who were not in our tournament. Thank you to everyone for coming out and making this another fun event for Steenburg Lake.
Donna Kaye Cochrane



Roadside Clean-up

This year's Roadside Clean-up event, originally scheduled for July 10th, had to be rescheduled because of rain. It was then further delayed because the townships had not yet cut back the tall grass along the sides of the North and South Roads.

Further delays in getting the grass cut were a result of equipment break-downs and the fact that Tudor and Cashel Township owns the equipment which both townships rely on to cut back the brush from the side of roads.

By the time the grass and the weather co-operated, there wasn't enough time to coordinate a formal roadside clean-up even, so organizers, Don and Diane Mills, along with a few volunteers along the North Road, managed to cover most of that road in an ad hoc fashion over the course of several days.

We would like to thank Don and Diane Mills, along with help from Steve and Glenda Brown, and the Cotie family. If you also participated in cleaning up your road, either on the north or south side of the lake, take a bow. Thank you all for keeping our community beautiful.

We will endeavour to organize a formal clean-up day again next year.



Just a friendly reminder that if you enjoy visiting your cottage off the South Road in winter, why not contribute to the snow plowing that makes year round access possible.

Contact :

Gord Schad or Jim Tanner

(Phone numbers and email addresses are available at Steenburglake.com)

The Bancroft Times, Thursday, July 21, 2016 Page 7

Steenburg Lake Neighbours Save The Day

by Kristena Schutt

The community of Steenburg Lake came together on Sunday, July 17, in a neighbour's time in need. Joseph and Valerie Burke were out on the lake with their two guests D.C. and her mother Nancy just floating around the lake at about 4pm when they saw a boat turn over and begin to sink in front of them. The boat was an aluminum 14 foot boat with a 9.9 motor, which before it flipped was pulling two youth on floating tubes with the father in the boat driving.

When they saw the boat turn over Joseph and Valerie pulled up near and threw a rope to the man who tied it to his boat as the children swam for shore with the tubes. Two other neighbors came up with their canoe picking up the floating items such as the boat's emergency and safety equipment and paddles, and when the boat was successfully secured they picked up the father.

Joseph steered the Burke's pontoon toward the man's dock as the turned over boat float and bobbed

behind. Once the aluminum boat was secured to the dock they managed to turn it back over and empty the water out. Fortunately for the family was able to keep all their items as both the motor and gas tank had been fastened to the boat and their floatable possessions were retrieved safely.

No one is sure what happened as the aluminum boat was not going very fast nor was it turning sharp. Thankfully all were wearing life jackets.

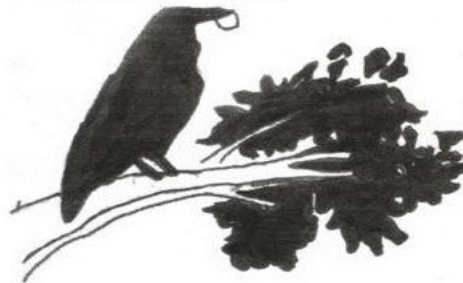


Once brought to the dock the turned over boat was easily flipped over and the water scooped out.

- photo submitted by Joseph Burke

Sadly, Joe Burke passed away this summer following a massive heart attack. Joe was a very kind and loving husband, father and grandfather, and he loved the lake more than anywhere on the planet. He will be sorely missed.

Julius G. Bognar



BOGNAR

TREE SERVICES

DANGEROUS TREE REMOVAL
TOPPING AND FALLING
TRIMMING (Trees and Shrubs)
 CHIPPING

Office: 1-613-473-1818
 Cell: 1-613-849-1415

A division of BOGNAR ENTERPRISES INC.

Financial Report - August 31, 2016

by Dave McDonald

We finished our 2015-2016 fiscal year with a healthy profit, up slightly over 2014-2015.

The increase in net income was due to a number of offsetting increases and decreases in both income and expenses. Membership Income and Interest Income were both consistent with 2014-2015, while Sponsorship Income was higher than last year due to the addition of a new sponsor, and Merchandise Income was down slightly from the previous year. Expenses for 2015-2016, with prior year figure in parentheses, were: Merchandise Costs \$1,450 (\$1,288), Fun Run Expenses \$315 (\$585), AGM/Regatta \$470 (\$808), FOCA Dues \$717 (\$717), Insurance \$1,652 (\$1,573), Newsletter \$1,579 (\$1,597), Members Handout \$669 (\$0), Bank/PayPal Charges \$86 (\$78), Rock Markers \$328 (\$288), Donations/Gifts \$169 (\$484), Web/Webcams \$218 (\$119).

Further detail on our financial results is always available upon request to SLCA members. Please feel free to reach out directly to treasurer@steenburglake.com with any requests for details, or with any questions or comments.

Just a reminder to place your orders for some great **Steenburg Lake Merchandise** in time for Christmas. Hats, T-shirts, hoodies and more... These quality items make great gifts, and each item purchased helps support your community and the important work the SLCA performs.

...and these handy bolson whistles are ideal for your boat's safety kits. Made of solid metal, they won't break if stepped on. And they make great stocking stuffers, at just \$3 each.



Visit: www.steenburglake.com/merchandise.html

911 Services for Unmaintained Roads

The Township of Tudor and Cashel would like to remind those residents that have 911's on unmaintained roads within the township that they are responsible for ensuring that the roadways and lanes leading into the structures are passable for emergency vehicles. The safety of our volunteers is paramount. Damage to equipment can be costly and may result in malfunctions, which puts everyone at risk. This is important for the safety of our emergency workers and their equipment.

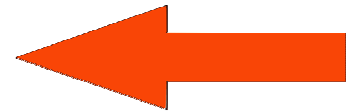


These parameters are meant as a guideline for the safe travel of emergency vehicles. Roads, driveways or laneways serving one or more principal structures should be constructed and maintained to a minimum twenty-two feet width travelled way and base material depth

sufficient to support access by emergency vehicles. Brushing of shrubbery and trees along the access should be to a height of fifteen feet to allow vehicles to pass without being damaged. For those long laneways a turnaround should be available for emergency vehicles.



Ensuring that the access to your property is clear for those that may be called upon to provide lifesaving services is invaluable. For those properties that are not serviceable, please remember that you may need to get those in need of assistance to the nearest maintained intersection. This is especially the case in the winter when the snow or road conditions may not allow clear passage. Fire and Ambulance services are there for those in need, but they have to be able to reach you.



The information shown at left was part of a brochure sent out to all mailboxes in the area by the Township of Tudor and Cashel in October.

Though there can be no disputing the importance and gravity of the subject of emergency vehicles and the need for clear access to all residences, it does beg the questions:

"Why is my township spending our tax dollars on fancy glossy brochures like this one and mailing them out to all the households in the area? Wouldn't the money be better spent making improvements to the roads in question, and ensuring that emergency vehicles can reach residents year round?"

If you agree, why not contact your Reeve or Councilor and ask why they do not make lasting improvements to roads in our township where residents are known to live all four seasons of the year. Why not make changes that improve the odds of saving lives.

A roadside sign on the side of a road or a glossy brochure does not absolve them of the responsibility to protect residents and their property from harm.

Reeve Wanda Donaldson (613) 473-4806

reeve@tudorandcashel.com

The Cottage Bookshelf

Review by David McDonald

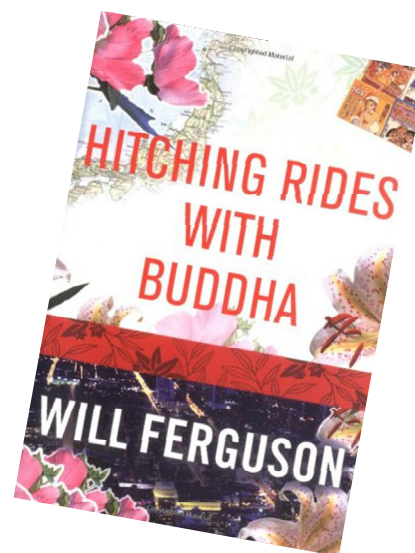
Hitching Rides with Buddha (A Journey Across Japan), by Will Ferguson

In this book with the intriguing title, Canadian travel writer and novelist Will Ferguson writes of his adventures hitchhiking the length of Japan. He travelled from the southernmost tip at Cape Sata on the island of Kyushu, to the northernmost point of Cape Soya on the island of Hokkaido.

There is a common misconception that Japan is a small country. It is, however, a rather large country relatively speaking. Japan is larger than most countries in Europe, including Norway and Germany, and its main island of Honshu alone is larger than Great Britain. The journey from Cape Sata to Cape Soya is about the same distance as the trip from Miami to Montreal. One reason for this misconception is due to a cartographical optical illusion, meaning that the country looks small because it is surrounded by the largest nations on earth: China, Russia, Canada, the United States, and Australia. This is just one of the interesting facts that can be learned from reading this book. In addition, we learn about Shinto, the national religion, aspects of Japanese character, geographical peculiarities, and many other compelling facts.

Why hitchhike the length of Japan? For Ferguson, it began while he was working in Japan teaching English. While attending one of the many Cherry Blossom faculty events, he announced (while apparently under the influence) that he was planning to follow the Cherry Blossom Front all the way to Hokkaido. This was taken seriously by other staff members, who made a point of regularly reminding him of it afterwards. Eventually he decided he would actually do it by hitchhiking, as he wanted to travel amongst the Japanese in their own space. When I first heard the premise of this book it seemed a little unbelievable. There is a common conception that the Japanese are somewhat ethnocentric, and not always that open to outsiders and foreigners. How, I wondered, would a North American Caucasian ever be able to get enough rides from Japanese motorists to take him the entire length of the country? He did accomplish it!

Eventually someone would pull over to pick him up. In many cases the people went so far out of their way to help him that it is almost unbelievable. An example of this was his second ride. Starting out from a point near the south of Japan, Ferguson initially had to head to Cape Sata to begin his "tip to tip" journey. A middle-aged man with his three young children in the car pulled over to pick him up. Upon learning where Ferguson was heading, the motorist told him he was heading in the wrong direction and offered to drive him all the way to Cape Sata, even though that was not where he and his children were going. He even paid Ferguson's admission to the visitor centre there and looked at the sights with him. He then invited Ferguson back to his home to have dinner with his family. After a full course meal and several drinks his host invited him to spend the night. The benefactor, feeling sorry for Ferguson, offered to pay for a train ticket for him to make his trip. After being assured that he was not hitchhiking for financial reasons, the host offered to drive him out to the highway to a good point to start his journey along the coast. Even though the Japanese friend was supposed to be at his job at 9:00 A.M., he kept driving the entire morning, finally dropping off his guest at noon.



ISBN: 1-94195-785-2

While not all of Ferguson's rides involved motorists who were this generous, this experience was not atypical of the people encountered. This book gives us great insight into Japanese hospitality. In Hitching Rides with Buddha, you will read about a lot of interesting and amusing happenings experienced by the author as he travels to his destination at Cape Soya.

Will Ferguson has written a number of books, involving travel or about the Canadian experience, mostly with a humorous slant. A couple of his recent books have been of a more serious nature: 419, about Nigerian scams, and Road Trip Rwanda, about a trip to the locale of the massacre. If you read Hitching Rides with Buddha and enjoy it be sure to read his other works.

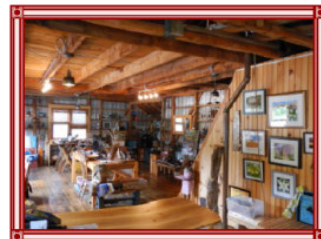
The Cottage Bookshelf is a regular feature of your Shoreline News. Feel free to submit your own reviews and recommendations to Newsletter@steenburglake.com.



Furniture, Cottage
Décor, Gifts and
More
Over 35 Artists
One Location

New Espresso Bar

10 a.m. - 5p.m. Wed to Sun
Victoria Day until Thanksgiving
Custom Orders available all year
info@tinhousewoodworking.com



5424 Hwy 620 in the Hamlet of Coe Hill
www.tinhousewoodworking.com

Cottage Cookbook

by Anita Waddell

Zucchini Bread

Ingredients:

- 3 eggs
- 2 cups white sugar
- 1 cup salad oil
- 2 cups grated peeled zucchini
- 1 tsp. vanilla
- 3 cups sifted all-purpose flour
- 1 tsp. baking soda
- 1/2 tsp. baking powder
- 1 tsp. salt
- 1 tbsp. cinnamon
- 3/4 cup chopped walnuts (optional)
- 3/4 cup chopped dates (optional)

Directions:

Beat eggs well, add sugar, oil, zucchini & vanilla & mix well. Sift flour, baking soda, baking powder, salt & cinnamon together & add with nuts & date to egg mixture. Mix well. Bake in two 9x5x3 greased/floured pans.



Feel free to submit your favourite cottage recipes to:

Newsletter@steenburglake.com



Dwayne Nicholson

2593 North Steenburg Lk Rd, Coe Hill, ON K0L 1P0

**Time to Think Snow
and Plan Ahead for Winter**

*Snow Plowing
Driveway Sanding
Roof Shoveling*

Phone: 613-474-1122

Cell: 613-332-8392

Email: eden2593@gmail.com

Editorial: An Update on Hydro One

by Pat Stallaert

Barely a week went by this summer without Hydro One making the news. Seems everyone can't help but notice how their hydro bills are rocketing upward. And nowhere is the impact being felt more than in rural Ontario.

Global News aired a report advising that some areas of Ontario have seen increases of 100% since the Liberals have been in power. The report went on to note that delivery charges for electricity in rural areas are two to three times that of urban areas.

The MP for Hastings, Mike Bossio, held a press release to go on record saying that hydro bills are too high in rural Ontario and labelled electricity as an essential service in this day and age. Though there are relief plans for families that cannot afford to pay their electric bills, the relief offered is insignificant compared to the staggering bills they are receiving, and this relief applies only to the poorest of Ontario households.

Cottage Life magazine featured an article about a man who had to sue Hydro One because he repeatedly received large bills for electrical delivery charges while his property was completely disconnected from the grid. Delivery of what you might ask?

The Canadian Union of Public Employees (CUPE) announced that it will be filing a class action lawsuit against the Ontario Government over the sale of Hydro One. The suit alleges that the Liberal government has pressed forward with the sale of one of the province's greatest assets, without ever receiving a mandate to do so, and despite expert advice against such a sale from almost every possible source, including the Auditor General of the province. The Wynne government has realized only 3.2 billion dollars from the sale of 30% of Hydro One so far: A figure many analysts peg as far under value.

Under mounting pressure to address runaway hydro rates, Premier Kathleen Wynne announced that her government will be issuing rebates to Hydro One customers equivalent to the province's portion of the HST (8%):

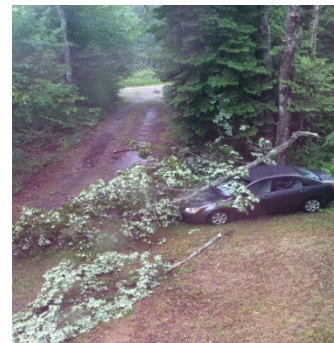
With all the complaints and negative outcry against Hydro One these days, the company appointed its first ever Ombudsman, Fiona Crean, to reportedly monitor and act upon complaints by its customers. Things must be pretty bad at Hydro One if it has to hire an Ombudsman...

The Ontario Government then announced that Hydro One will not proceed with the second round of green energy projects, citing that the utility "does not require the extra electricity at this time, and is seeking to keep electrical rates as low as possible". Rather ironic when you consider that the high electrical prices in this province were brought on largely by the Liberal government's rush to appear environmentally correct.

It was the McGuinty government who decided to force green energy projects to proceed at unprecedented rates by introducing artificially high Feed In Tariffs (FIT) for those producers of solar and wind electricity. Hydro One pays up to 38.4 cents per kWh of electricity produced by solar power (2 to 3 times what it charges for electricity it sells). No wonder Hydro One has gone heavy with their delivery charges, when it technically loses money selling green energy back to us...



The Storm of 2016...



Propane Customers Now Have a Choice...

by Pat Stallaert

Propane has become one of the preferred forms of energy in rural parts of the country, and for good reason. It's very portable, relatively safe when handled and stored properly, reasonably clean burning compared to other fossil fuels and even wood, convenient, versatile, and still a good value when compared to options like heating with electricity. Propane is fast becoming as popular in rural Ontario as natural gas is in urban parts of Ontario.

Though most cottagers still view propane as a fuel to power their barbeques, many, particularly year round residents or those who seek to extend the use of their cottage to all four seasons, see it as a necessity.

Anyone who may have been following posts on the Steenburg Lake Facebook page this fall, may already be aware that Sparlings Propane of Bancroft have been offering customers on our lake a special price on bulk propane delivered to your property. The savings are significant (\$0.499/litre compared to \$0.599/litre at the open market rate as of the time of this writing).

Well I'm happy to report that Superior Propane has also established a buyers' group for customers on Steenburg Lake. Their fixed price is \$0.495/litre.

Obviously, the difference between the two probably isn't enough to make you switch from one supplier to another, especially if you factor in the early cancellation charges for changing from one supplier to another while still in a contract. But for those who were already considering changing suppliers or for those who have been considering installing bulk propane in the near future, this is nothing but good news!

If you are already with either Sparlings or Superior, it's also good news, as you can join either of these two buyers' groups and start saving on energy costs. My understanding is that there are at least 6 or 7 Superior Propane customers on the lake, and a few more than that who are with Sparlings. If you wish to start saving on propane, contact Sparlings in Bancroft and let them know that you wish to be added to the Steenburg Lake buyers' group. If you are already a Superior Propane customer, contact Joanne Barr – Energy Sales Representative at (613) 849-7480 or joanne_barr@superiorpropane.com and let her know you would like to be added to the growing new buyer's group.

Of course, this is not to say that there aren't other propane suppliers in the area, there are, such as Kelly's and Casey's, but to my knowledge, they do not yet provide customers on our lake a discount.

So a little competition is a good thing... Now if we could only do something like this with Hydro One!



613-337-5269

COSBY'S

SMALL ENGINES

***Sales and Service to all
Makes and Models of:
Lawn and Garden, ATVs,
Saws and Generators***

PORTABLE & STANDBY GENERATORS

**FACTORY TRAINED
WARRANTY REPAIR CENTRE**

613-337-5269

Fax: 613-337-5384

cosbysmallengines@gmail.com

6859 Hwy. 620, Coe Hill, ON



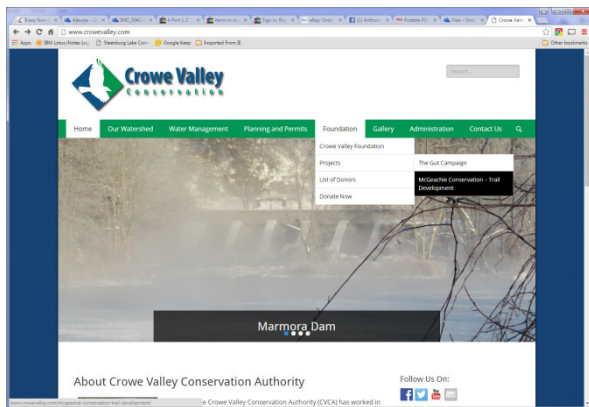
New McGeachie Trails Campaign

by Pat Stallaert

As mentioned in the AGM Update, the Crowe Valley Conservation Authority is in the process of developing new trails that will open up the north-east portion of the property. Students and a teacher of the Norwood District High School will work to clear the trails as part of their outdoor education curriculum.

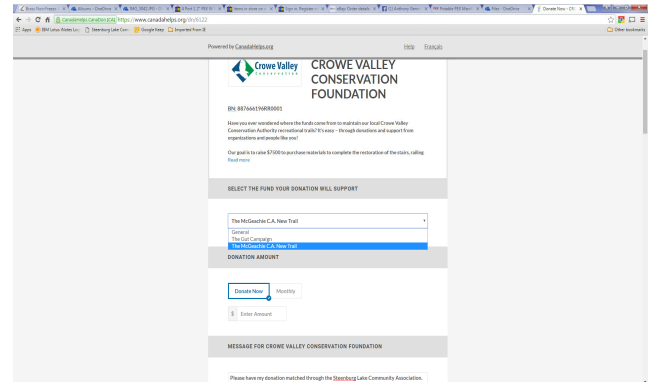
Your SLCA Executive have kicked off a campaign to help raise funds for this trail with a \$100 donation this spring, and an anonymous donor has agreed to match all donations made by our members to a maximum of \$10,000. Here's how you can make an online donation, receive a receipt for income tax purposes and have your donation matched.

Go to www.crowevalley.com



Under Foundation, choose Projects, then choose **McGeachie Conservation – Trail Development**. This will bring you to a page that describes the Conservation Area and the work being undertaken.

Click on the **Donate Now** button, and you'll be taken to the following site...



Choose **The McGeachie CA New Trail** project, and enter the amount you wish to donate, then enter a message to the Crowe Valley Conservation Authority. Make sure you mention that you are with the Steenburg Lake Community Association, and you wish to have your donation matched (see above).

Then click the **Donate Now** button.

Fill out the information form that follows along with your method of payment. Donations are eligible for a Charitable Tax Receipt.

IMPORTANT!!!

Please note, we recommend that you **do not** make your donation anonymous, or the details will not be shared with the Crowe Valley Conservation Authority, and they will not know to match your donation!

Century 21
ALL SEASONS REALTY LTD., BROKERAGE
The Local Experts™
Each office Independently Owned and Operated

**SMARTER
BOLDER
FASTER**



Call Us! We can answer your questions!

Emma Kearns

Ray Krupa

BROKER OF RECORD

BROKER/CO-OWNER

Cell: 613.332.9080

Cell: 613.332.8801

emma@bancroftwaterfront.com

info@raykrupa.com

NEW LOCATION!

**2 Hastings St. N
Bancroft, ON K0L 1C0
(beside Bancroft Eatery & Brew Pub)**

Phone: 613.332.5500
Toll Free: 1.800.351.0021
Fax: 613.332.3737

*Keep ahead of the market... If you want
Sold or Active listings for your lake
please don't hesitate to email or call us.*

www.bancroftwaterfront.com

SERIOUS ABOUT SERVICE

Continued...

Photo Contest Winners



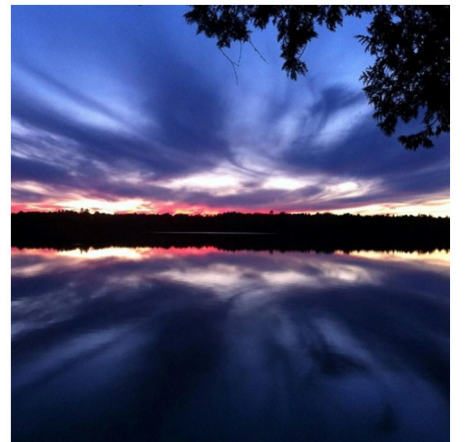
Anna Huk – Life at the Cottage



Carolina Rotella – Nature



Dave Voth – Short Video



Please Note:

This is the first year for the category of Short Video (under 2 minutes). To find a link to the full video, please visit our website at...

www.steenburglake.com



Around the Lake...

